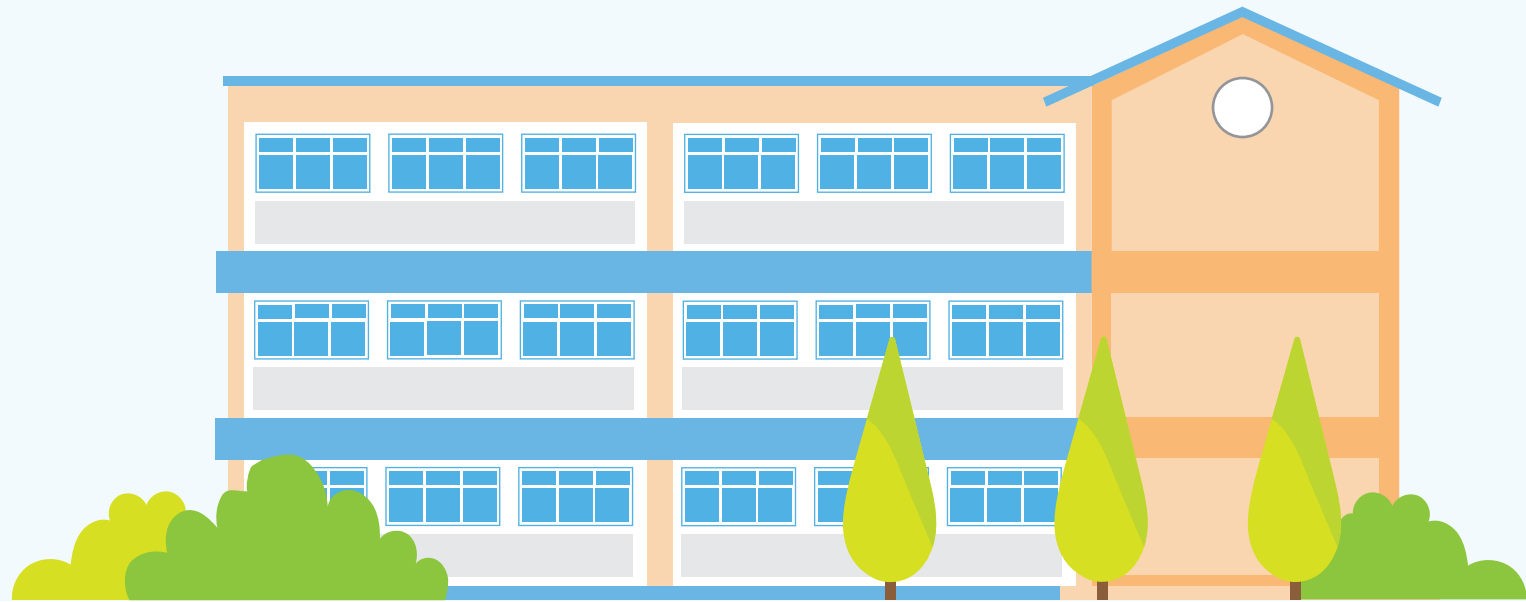


SAFE@SCHOOL

A Sustainable Strategy towards Safe Mitigation and Containment
of the COVID-19 Outbreak Within the Educational Sector



HEALTHY BUILDING

1.

Keypoints



Increase air ventilation



Increase air filtration



Adjust / reconfigure air flows



Switch on fans to promote air circulation. Position fans at windows to blow air outside and increase air exchange.



Allow more fresh outdoor air into classrooms and other indoor spaces.



Open all doors and windows at all times unless outdoor air quality is poor / poor weather.

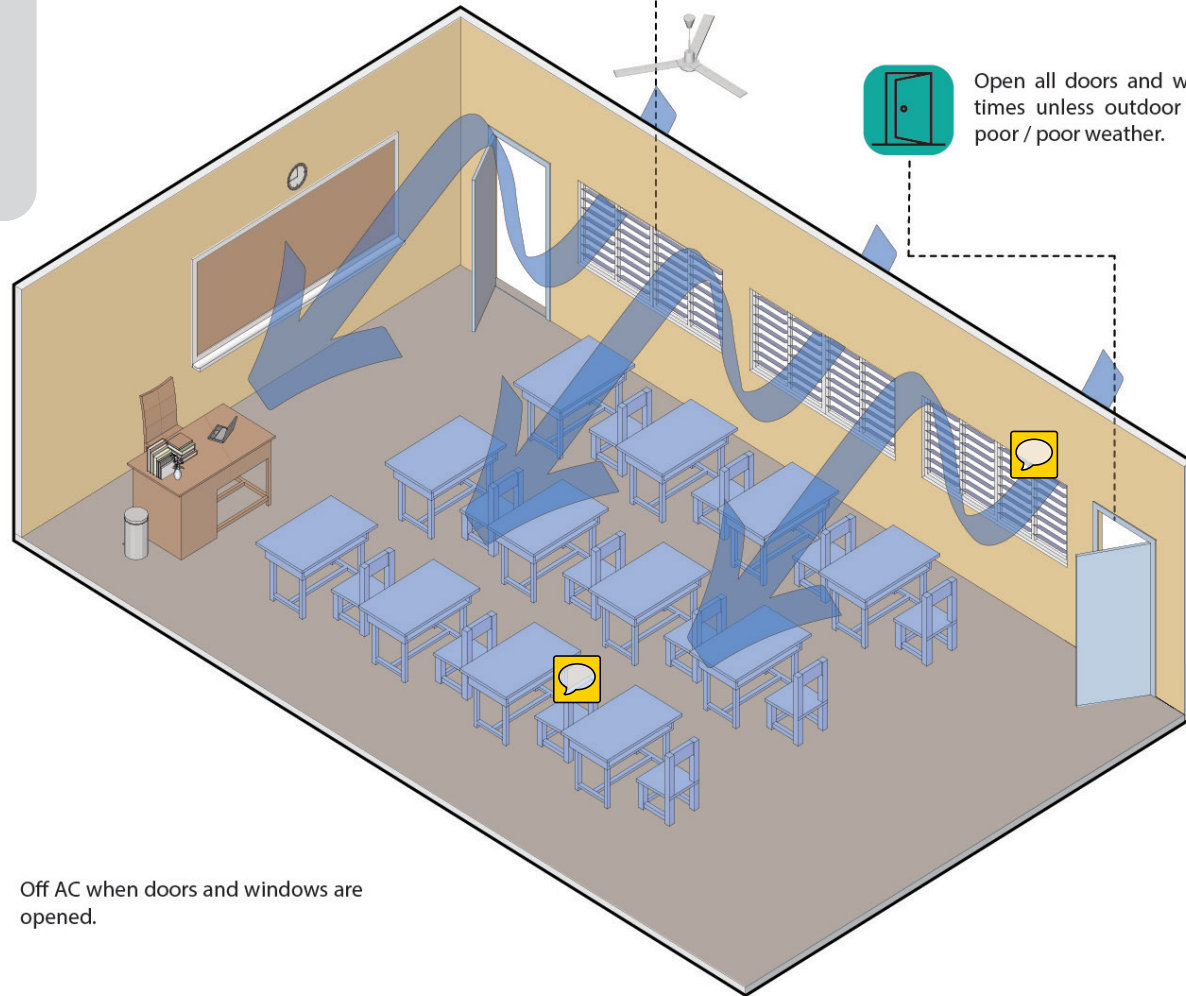
2.

Naturally Ventilated Rooms

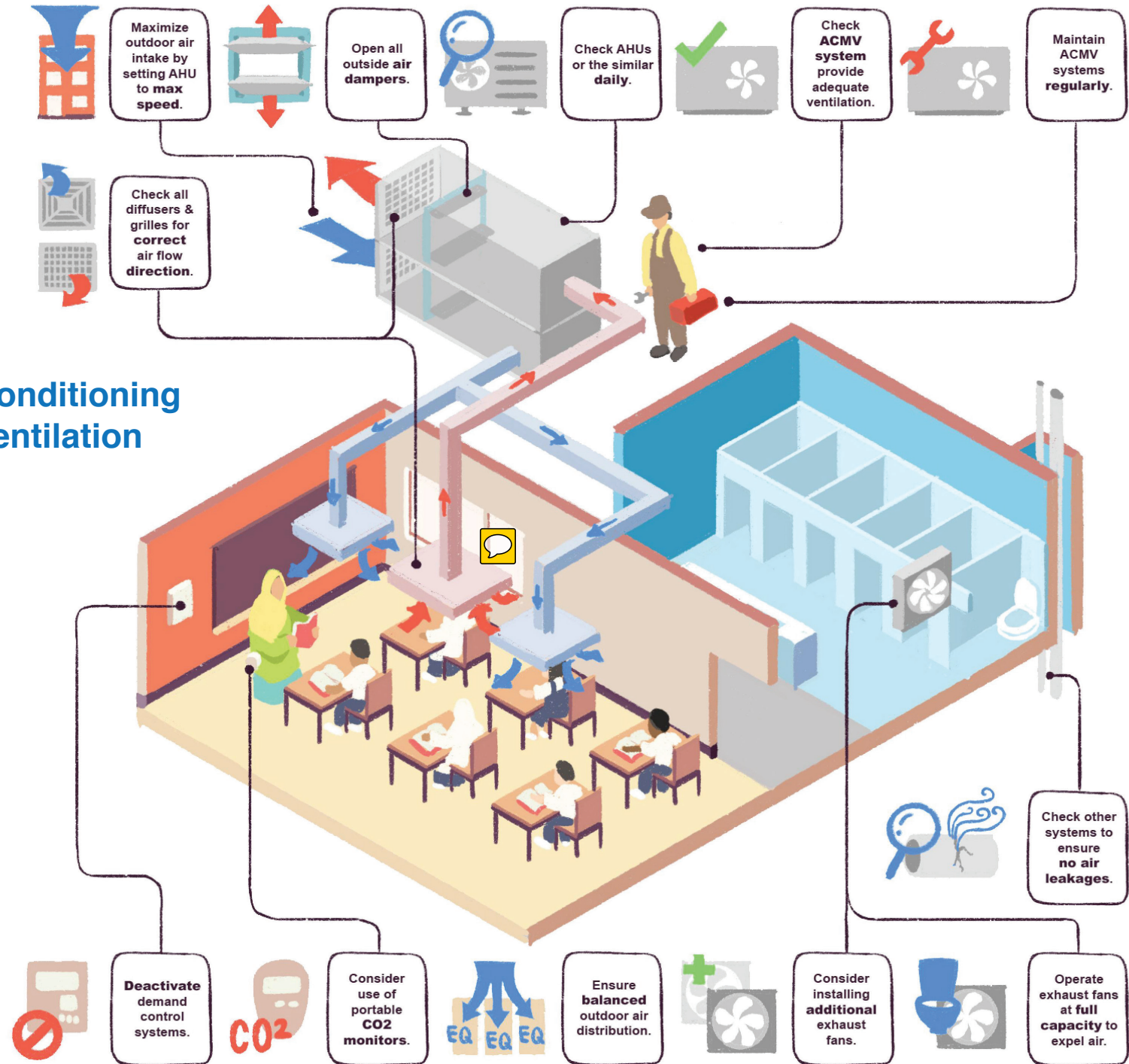
These Infographics are meant to showcase and highlight the important things to do in a class or any closed spaces where the classes or lectures would be held when the school reopens. This is also to make sure a better understanding on the standard operating procedure (SOP) of having a physical classes in the future while also ensuring the safety of the teachers and the students.



Off AC when doors and windows are opened.



3. Spaces with Air-Conditioning and Mechanical Ventilation



4.

Reconfigure Building Finishing

- Install touchless technology for dispensers of soap, sanitizers, paper towels. Adjust existing infrastructure to make it touchless.
- Install plexiglass shielding as physical barrier in selected areas such as reception, cafeteria checkout

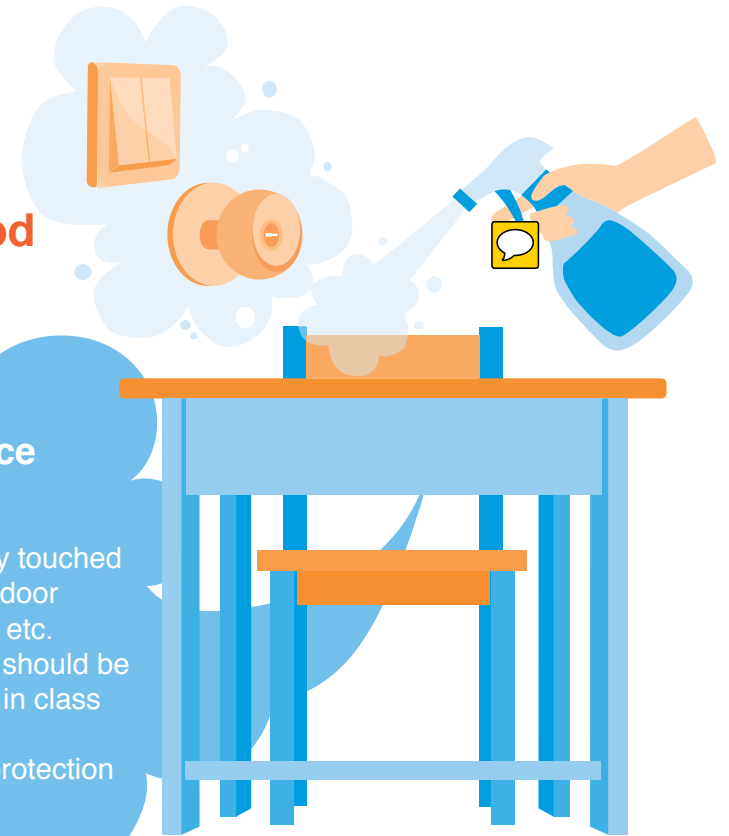


5.

Disinfection & Good Hygiene

Frequent contact surface disinfection

- Clean and disinfect all frequently touched and common user surfaces like door knobs, handrails, light switches, etc. Children's table tops and chairs should be wiped down before sitting down in class and when finishing for the day.
- Provide adequate training and protection of cleaning staff.



Good Toilet Hygiene

- Keep windows and/or doors open at all times, unless outdoor air quality is poor or the weather condition does not allow.
- Operate exhaust fans at full capacity to expel air from the indoor space. Keep windows or other openings around exhaust fans closed to avoid short-circuiting of air flow.
- For unoccupied buildings, water systems should be flushed for a minimum periods of 5 minutes with all branch of piping opened simultaneously to remove potential contaminants from stagnant equipment, piping, fixtures, etc
- Install lids on toilet seats and keep them closed during flushing
- Stagger toilet use